

# WATER RESOURCES INTEGRATION PROGRAM (WRIP) PHASE 2 – PIPELINE SEGMENTS 2C AND 3 PROJECT

**Nathaniel Virdell, P.E.**

Project Engineer, SAWS

**Florinda Gonzales**

Interim Contract Administrator, SAWS

**Marisol V. Robles**

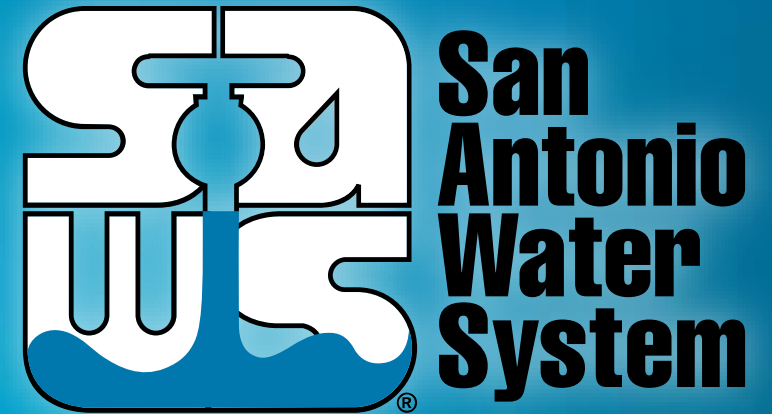
SMWB Program Manager, SAWS

**Robert Jenkins, P.E., PMP**

Project Manager, Freese & Nichols, Inc.

**Terry Conn, P.E., PMP**

Principal, Senior Project Manager, Civil Engineering Consultants, Inc.



Non-Mandatory Pre-Proposal Meeting  
August 12, 2020 at 10:00 AM

MAKING SAN ANTONIO  
**WATERFUL**



# Oral Statements

Oral statements or discussion during the pre-proposal meeting will not be binding, nor will it change or affect the terms or conditions within the Plans and Specifications for this Project. Changes, if any, will be addressed only via an Addendum.

# Meeting Agenda

- Non-Mandatory Pre-Proposal
- Contract Requirements
- RFCSP Evaluation Process
- Required Experience
- Evaluation Criteria
- SMWVB
- Proposal Packet Preparation
- Additional Reminders
- Communication
- Key Dates
- Project Overview
- Project Location
- Segment 2C Project Details
- Segment 3 Project Details
- Project Special Conditions
- Questions

# Non-Mandatory Pre-Proposal Meeting

- Key project information:
  - Construction duration is 720 calendar days
  - Construction estimate is approximately \$58 million
  - Request for Competitive Sealed Proposals procured under Chapter 2269 of Texas Government Code

# Contract Requirements

- Prevailing Wage Rate and Labor Standards – Section 2.10 of the General Conditions
  - Wage decisions located in the specifications
  - Certified payroll submitted on weekly basis
  - Contractors to utilize LCP Tracker
  - Site visits and interviews are random and unannounced (interviews are private & confidential)
  - Payroll records subject to review
  - All apprenticeship programs will need to be approved by Department of Labor prior to starting work
  - Prime contractor is responsible for sub-contractor payroll
  - Late payrolls may delay contractor payments

# Contract Requirements *(cont.)*

- Insurance –Section 5.7 of the General Conditions
  - General Liability, Pollution Liability and Installation Floater is required (see Supplemental Conditions)
  - Selected contractor must be compliant with all other contracts in order for SAWWS to award the contract
  - Insurance certificate will be requested prior to Board award  
Insurance must be compliant prior to executing the contract

# RFCSP Evaluation Process

- Technical Evaluation Committee will score the proposals based on the evaluation criteria published in the Supplementary Instructions to Respondents to determine the Respondent who can provide the best value to SAWWS
  - Technical scores
  - Price (lowest price receives the highest points)
  - SMWVB added to final scores
- Selection Committee makes recommendation
- Negotiation
- Board Award

## Required Experience (SIR-2)

- Respondents submitting a proposal for this RFCSP should clearly demonstrate, completely and sufficiently, that installing large diameter water mains via open cut and trenchless is a primary business focus and service, and such services have been successfully provided for at least five (5) continuous years



# Evaluation Criteria (SIR-3 to SIR-5)

## Team Qualifications and Experience - 20 pts

- Organizational Structure and Key Information of the Prime

### Contractor

- Company information (structure, debarment history, # of employees, years of construction work, etc.)
- Organizational Chart with Key Personnel and percentage of availability, clear description of roles and responsibilities (Prime and Key Subs)
  - Team history, or approach, if no prior experience to ensure successful completion of project
- Availability of equipment and facilities
- Financial statement within the last 12 months prepared by independent CPA

# Evaluation Criteria (SIR-3 to SIR-5)

## Team Qualifications and Experience - 20 pts (cont.)

- Qualifications and Experience of Key Personnel Proposed for Project
  - Resumes of Key Personnel on 8 ½” x 11”, one per person, not to exceed 1 page as identified on the Org Chart
    - Professional experience, education, role, descriptions of capabilities, etc.
    - List of all other active projects team member assigned, percentage of time, date of completion of work
    - Similar completed projects with description matches Section B Summary of Work

# Evaluation Criteria (SIR-3 to SIR-5)

## Team Qualifications and Experience - 20 pts *(cont.)*

- ✓ Key Personnel: PM, Project Superintendent, Open Cut Superintendent, Tunneling/Boring Superintendent, Tunnel Boring Machine (TBM) Operator
- ✓ Key Subcontractor roles: tunneling, micro-tunneling, hand mining, large diameter open cut, etc.

# Evaluation Criteria (SIR-5 to SIR-7)

## Quality, Reputation and Ability to Deliver Projects on Schedule and within Budget - 25 pts

- Prime Contractor On-Time Completion on Similar Projects in the past 15 years
  - List and describe 5 completed projects of similar size, scope, and complexity within the last 15 years with references
  - 3 of the 5 projects listed must have been performed by the proposed Key Personnel
  - If SAWWS experience, 1 project of similar size, scope, and complexity should be included

# Evaluation Criteria (SIR-6 to SIR-7)

## Quality, Reputation and Ability to Deliver Projects on Schedule and within Budget -25 pts (cont.)

- Prime Contractor list all current and recently completed large diameter water pipeline projects performed in the last five (5) years for all Utility Owners in the State of Texas
  - Include project name, owner, corresponding key personnel proposed for this project, original contract completion date and actual date, original price and final price, total cost of Change Orders (CO) with reason for CO, and identify if completed on time and on budget and if not explanation why
    - If not complete, provide percentage of completion
    - And, if off track provide reason and schedule recovery plan

# Evaluation Criteria (SIR-6 to SIR-7)

Quality, Reputation and Ability to Deliver Projects on Schedule and within Budget - 25 pts (cont.)

- Key Subcontractor(s) Performance on Similar Projects in the past 5 years
  - List of 3 projects that Key Subcontractor's PM and/or Superintendent participated in of similar size, scope, and complexity
  - If Prime will self-perform and has no Key Subcontractors, list 3 additional projects using the same project forms
    - Key Personnel must have participated in at least 2 of the 3 projects
    - Same key project information as for prime projects

# Evaluation Criteria (SIR-7 to SIR-9)

## Project Approach including Delivery Schedule (15 points)

- Project Approach
  - Narrative on completing the project, including key milestones, critical path items, phases and/or sequencing, permits, etc.
  - Describe approach for coordination with key stakeholders
  - Provide innovative ideas for cost savings (due to method or duration)
  - Quality Management Plan including subcontractor oversight, QA/QC, etc.

# Evaluation Criteria (SIR-7 to SIR-9)

## Project Approach including Delivery Schedule (15 points)

- Project Schedule, Procurement of Long-lead items, Unforeseen Conditions
  - Critical path method (CPM) schedule in Primavera or Microsoft project
    - Assume NTP of November 20, 2020
  - Include contractual milestones, limitations and completion
  - Procurement of long-lead items and critical path shop drawing submittals
  - List and describe prior instances of unforeseen conditions
  - Approach for mitigating and managing risk for unforeseen conditions on this project



# Evaluation Criteria (SIR-7 to SIR-9)

## Project Approach including Delivery Schedule - 15 pts (cont.)

- Availability of Key Personnel and Equipment
  - Specifically utilized for the project
  - Describe availability of equipment and facilities that will be specifically utilized for this Project.
  - Corresponding org chart list of available workforce for various disciplines required for this project including number of crews, number of personnel and skill classification

# Evaluation Criteria (SIR-7 to SIR-9)

## Project Approach including Delivery Schedule - 15 pts (*cont.*)

- Safety Information for Prime and Key Subcontractors
  - Provide records showing Total Recordable Incident Rate (TRIR) for each year for the past five (5) years
  - Provide records showing the company's Experience Modification Rate (EMR) for the past three (3) years
  - List any fatalities in the company's safety history

# Evaluation Criteria (SIR-10 and SIR-10-SIR-13)

## Price Proposal - 30 pts

- Lowest total price will receive 30 points
- Remaining proposals will receive points based on comparison to the lowest price proposal

## SMWB - 10 pts

## SMWB Eligibility

From SIR-10: Eligibility for being recognized as an SMWB and counting toward the 20% aspirational SMWB goal:

- Must be certified by the South Central Texas Regional Certification Agency
- Must be certified as a Small Business Enterprise (SBE) at minimum
- Must perform a commercially-useful function on the project
- Must have a local presence in the San Antonio Metropolitan Statistical Area

# SMWB Scoring

## A. M/WBE Scoring Method: Up to 10 Points (By percentage). **20.00% M/WBE Goal:**

- MBE Participation Percentage between 1% and 4.99%: 1 Point
- MBE Participation Percentage between 5% and 9.99%: 2 Points
- MBE Participation Percentage between 10% and 14.99%: 4 Points
- MBE Participation Percentage between 15% and 16.99%: 5 Points
- MBE Participation Percentage between 17% and 19.99%: 8 Points
- MBE Participation Percentage meeting or exceeding 20.00%: 10 Points

## B. SBE (Non-M/WBE) Scoring Method (for participation of firms whose sole certification is "SBE"): Up to 5 Points (By percentage). **5% SBE Participation:**

- SBE Participation Percentage between 1% and 1.99%: 1 Point
- SBE Participation Percentage between 2% and 2.99%: 2 Points
- SBE Participation Percentage between 3% and 3.99%: 3 Points
- SBE Participation Percentage between 4% and 4.99%: 4 Points
- SBE Participation Percentage meeting or exceeding 5.00%: 5 Points

# Post Award: Subcontractor Payment & Utilization Reporting (S.P.U.R.) System

1. Subcontractor & Supplier Payment Tracking

2. Subcontractor and Supplier Additions or Substitutions

3. LCP Tracker

4. Must be Current and Accurate before Retainage is released

<https://saws.smwbe.com>



San Antonio Water System

OUR MAIN SITE CONTACT SUPPORT

## Subcontractor Payment & Utilization Reporting System

Log In

**System Training**  
Learn how to fully utilize our system with a live trainer  
Training

**About the System**  
Learn more about this system and how it works today  
Information for Vendors

**Account Access**  
Lookup Vendor accounts or reset user passwords  
Account Lookup  
Forgot Password

The Subcontractor Payment & Utilization Reporting System is powered by B2Gentry Software © Copyright 2018.

# SMWB Questions

Questions related to SMWB may be directed to SAWS' SMWB Program Manager until the proposals are due. Her contact information is as follows:

**Marisol V. Robles**

Contract Administration Department

San Antonio Water System

Email Address: [Marisol.Robles@saws.org](mailto:Marisol.Robles@saws.org)

# Proposal Packet Preparation

- Thoroughly review Instructions to Respondent and Supplementary Instructions to Respondents (the sooner the better)
- Utilize Proposal Response Checklist
  - 1 original, 1 USB/thumb drive matching original and 15 copies
    - Information for the Original differs from copies
- Three (3) envelope/boxes
  - Price Proposal with bid bond
  - Original proposal with USB including all required documents and financial statement
  - 15 copies



# Proposal Packet Preparation *(cont.)*

- Ensure contact information for all references is valid, if SAWWS is not able to contact references for any of the projects, points may be deducted or proposal deemed non-responsive
- Use Word version of Evaluation Criteria forms to respond
- Ensure required documents are submitted and signed, (i.e. Respondent Questionnaire, CIQ, etc.)
- Entire proposal clearly demonstrates Required Experience

# Additional Reminders

- Register with Vendor Registration Program on the SAWS website at [www.saws.org](http://www.saws.org) to ensure access to the latest information.
- To receive updates on specific projects, registered vendors should subscribe to the project by selecting the project, and clicking ‘Subscribe’ under the Notify Me box.



## Notify Me

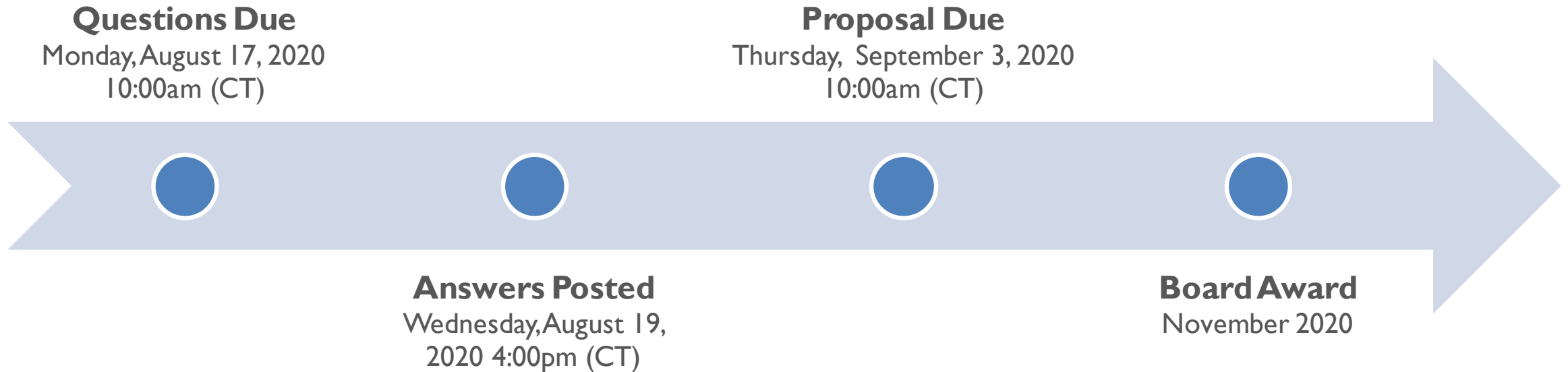
Receive updates sent  
straight to your inbox.

Subscribe

# Communication Reminders

- There shall not be any communication with the following during the Proposal period:
  - ✓ Design Engineer
  - ✓ Geotechnical and Environmental Engineers
  - ✓ SAWS Project Manager or Project Engineer
  - ✓ Any other SAWS staff
  - ✓ City Council member or staff
  - ✓ SAWS Board of Trustees
- This includes phone calls, emails, letters, or any direct or indirect discussion of the Proposal

# Key Dates



# Submission Due Date

- Proposals due no later than **10:00 AM CDT on September 3, 2020**
- Follow specific delivery instructions:
  - FTP requests no later than 2:00 PM CDT on September 2, 2020
  - Deliver or mail to 2800 U.S. Highway 281 North, Suite 171, Customer Service Building, Counter Services (across from the guard station)
    - Make arrangements if mailing a response to this RFCSP
- Late responses will not be accepted and will be returned unopened

# Questions

- Should be submitted no later than Monday, August 17, 2020 at 10:00 AM CDT
- Must be submitted in writing:

**Florinda Gonzales**

**Interim Contract Administrator**

Contract Administration Department

San Antonio Water System

Florinda.Gonzales@saws.org

Fax: (210) 233-3914

# Project Overview

- Construction of approximately 84,769 LF of 48" diameter pipeline in SW Bexar County
- Pipeline Criteria:
  - Welded Steel
  - Polyurethane Coated
  - Mortar Lined
  - 0.25" Minimum Wall Thickness
  - Cathodic Protection System

# Project Overview

- Some construction within 100-year floodplain
- Area is mostly undeveloped (grass, brush, and trees)
- Geotechnical Data Report (GDR) available
- Project will be one contract, one set of specifications and two sets of plans
- Addendum to follow, which adjusts depths and crossings of utilities based on updates, as well as special requirements for construction phasing in some locations



# Project Location

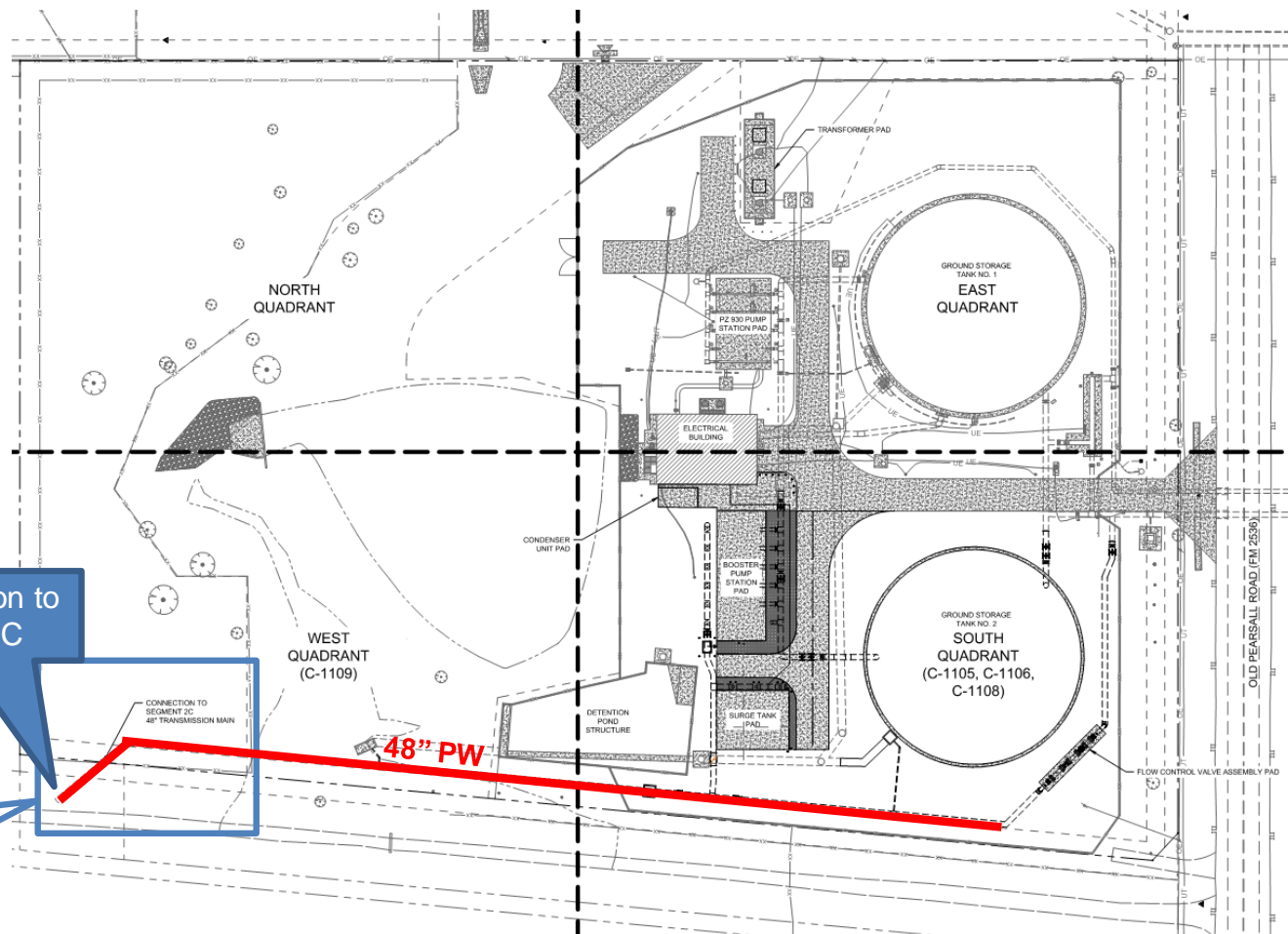
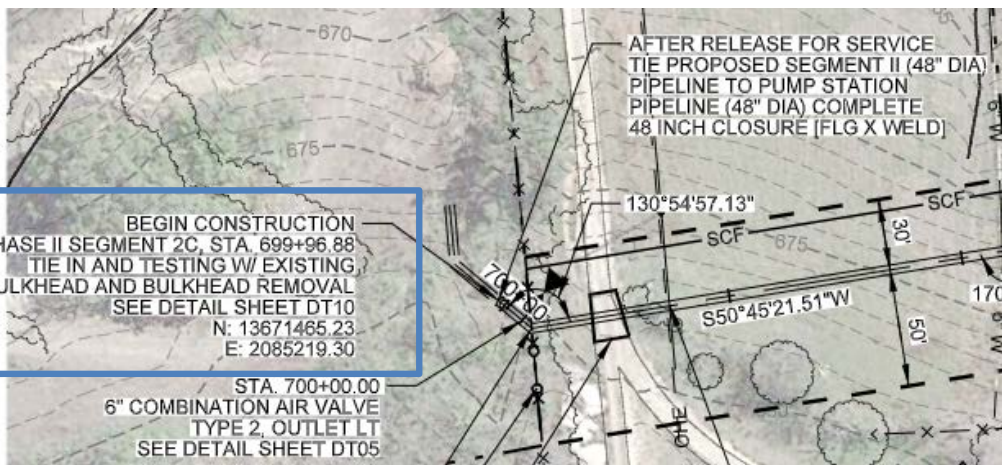
- Segment 2C begins at Old Pearsall Road Pump Station
- Segment 3 ties into Anderson Pump Station



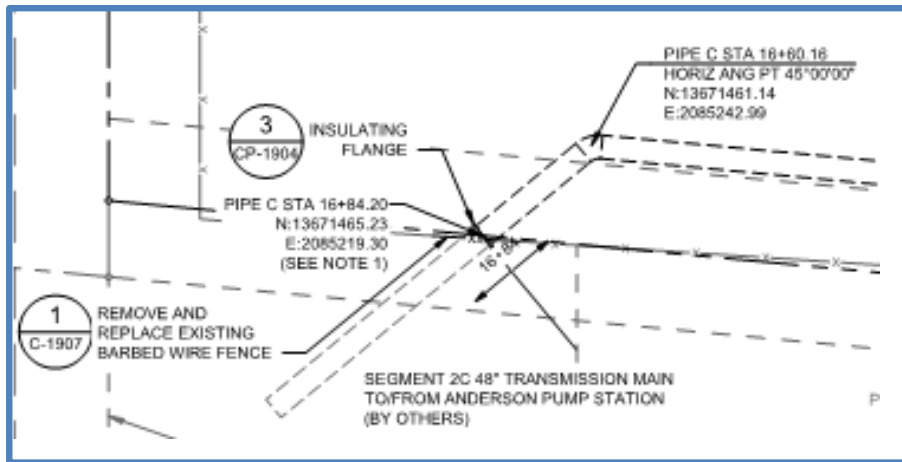
# Segment 2C Project Details

- Approximately 14,888 LF of 300 pressure class 48” diameter pipe
- 263 LF to be installed within a bored steel casing
- Crosses Medio Creek and Covel Road and several private roads
- Crosses Waste Management Property
- Crosses closed Nelson Gardens Landfill (not in waste areas)
- Coordination with crop owner

# Segment 2C Old Pearsall Road Pump Station Tie-in



## Tie-in Location

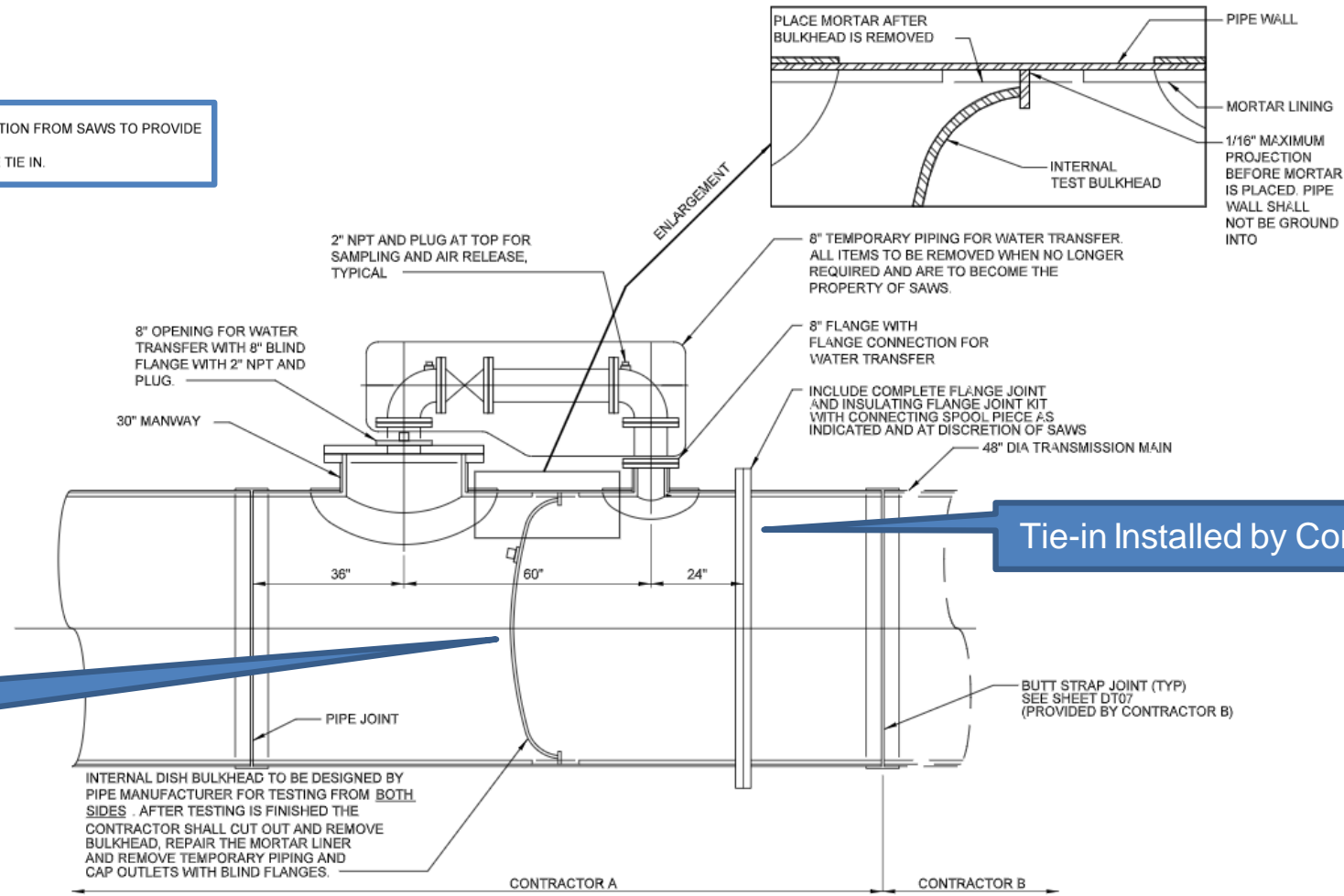


48" Connection to Segment 2C

## Old Pearsall Road Pump Station

# Segment 2C Old Pearsall Road Pump Station Tie-in

CONTRACTOR A / CONTRACT A = CONTRACTOR WITH DIRECTION FROM SAWS TO PROVIDE PIPELINE TEST BULKHEAD.  
 CONTRACTOR B / CONTRACT B = CONTRACTOR TO PROVIDE TIE IN.



INTERNAL DISH BULKHEAD TO BE DESIGNED BY PIPE MANUFACTURER FOR TESTING FROM BOTH SIDES. AFTER TESTING IS FINISHED THE CONTRACTOR SHALL CUT OUT AND REMOVE BULKHEAD, REPAIR THE MORTAR LINER AND REMOVE TEMPORARY PIPING AND CAP OUTLETS WITH BLIND FLANGES.

INTERNAL TEST BULKHEAD ASSEMBLY  
 NOT TO SCALE

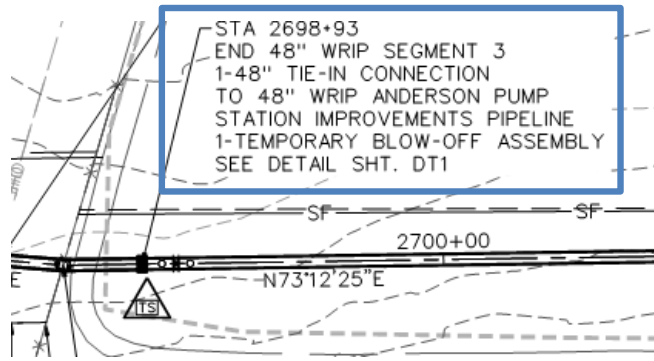
Bulkhead Assembly Installed by Contractor A

Tie-in Installed by Contractor B

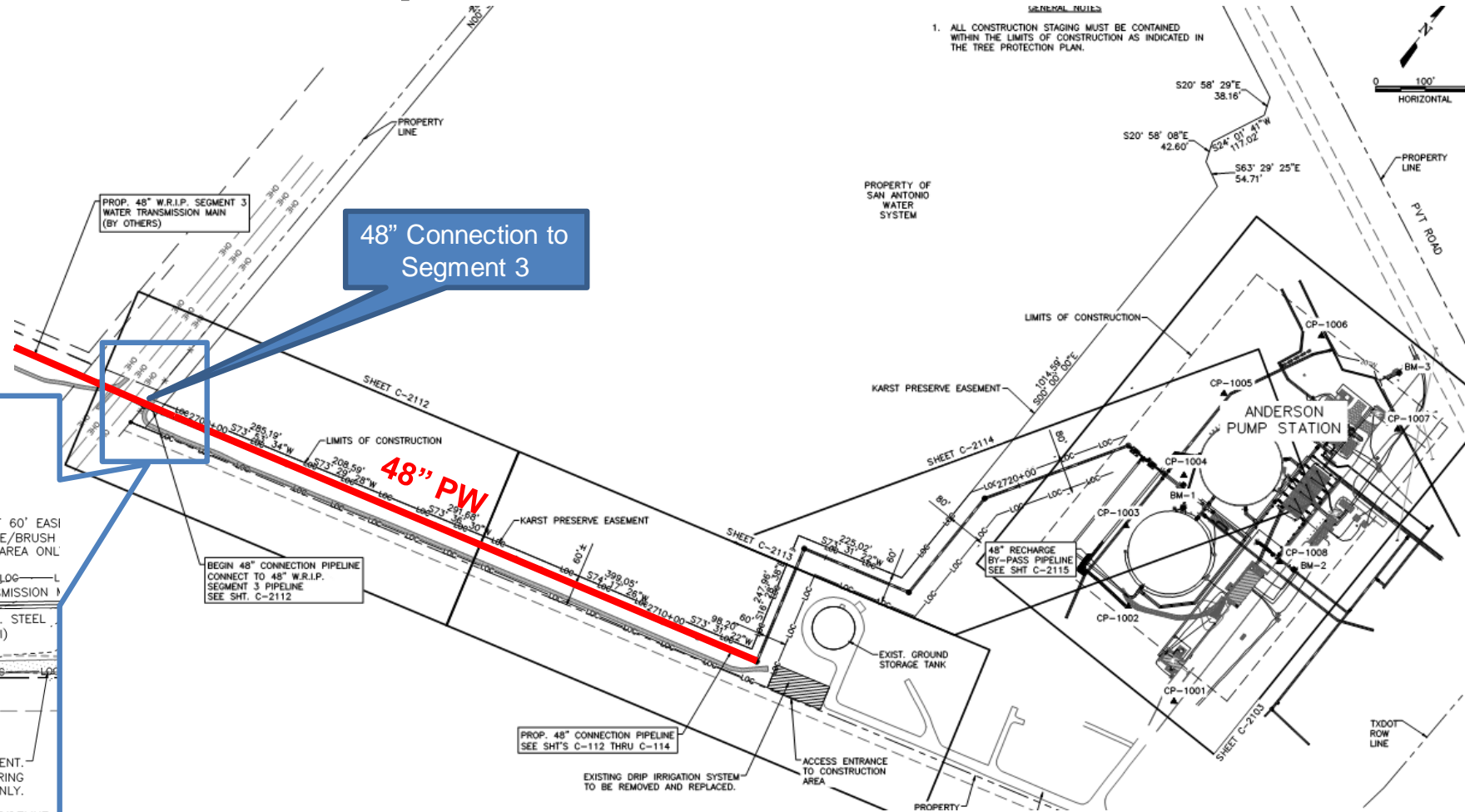
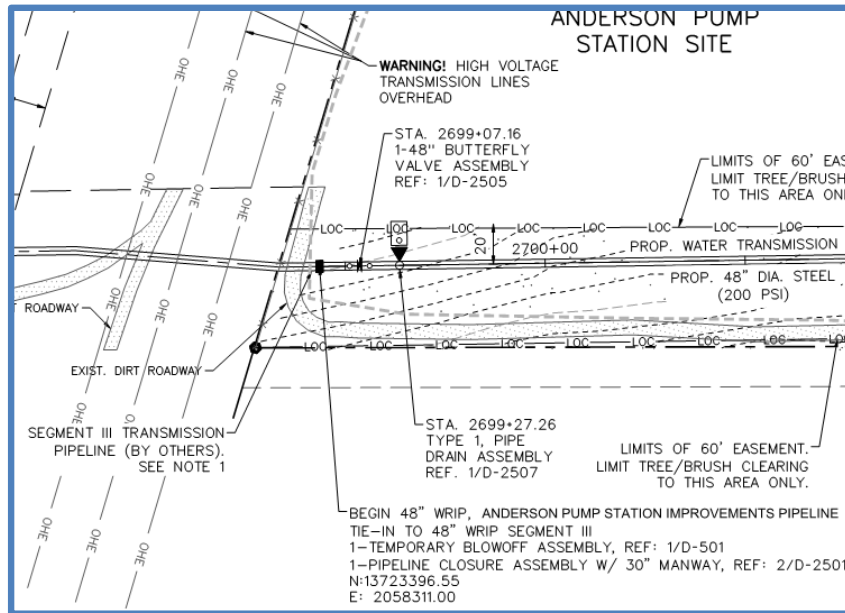
# Segment 3 Project Details

- Approximately 57,191 LF of 200 psi pipe with 0.25 inch minimum wall thickness, 10,515 LF of 250 pressure class pipe, and 2,175 LF of 300 pressure class pipe
- Crosses 24 streams, 15 local roadways, and 4 TxDOT highways
- The pipeline will be installed in an 80-foot wide easement. Limited access to 20-feet of the easement to preserve tree canopy
- Approximately 3,125 LF to be installed by boring
- A significant portion of the line will be excavated in very dense subgrade

# Segment 3 Anderson Pump Station Tie-in

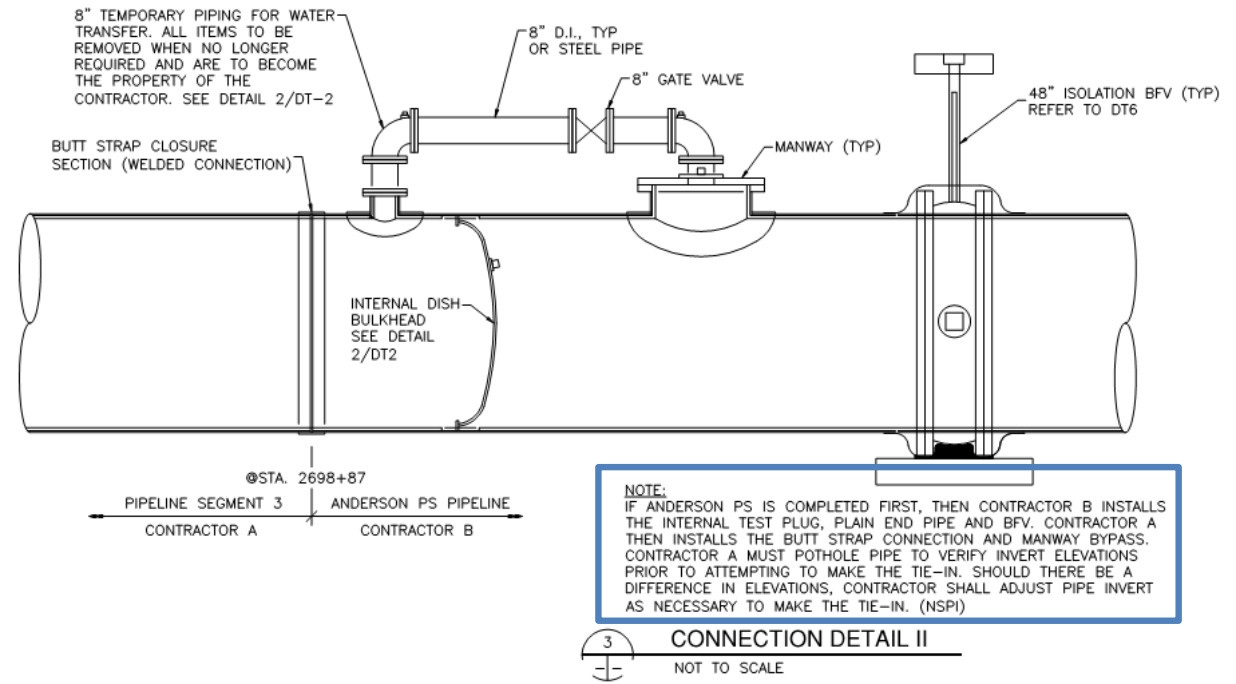
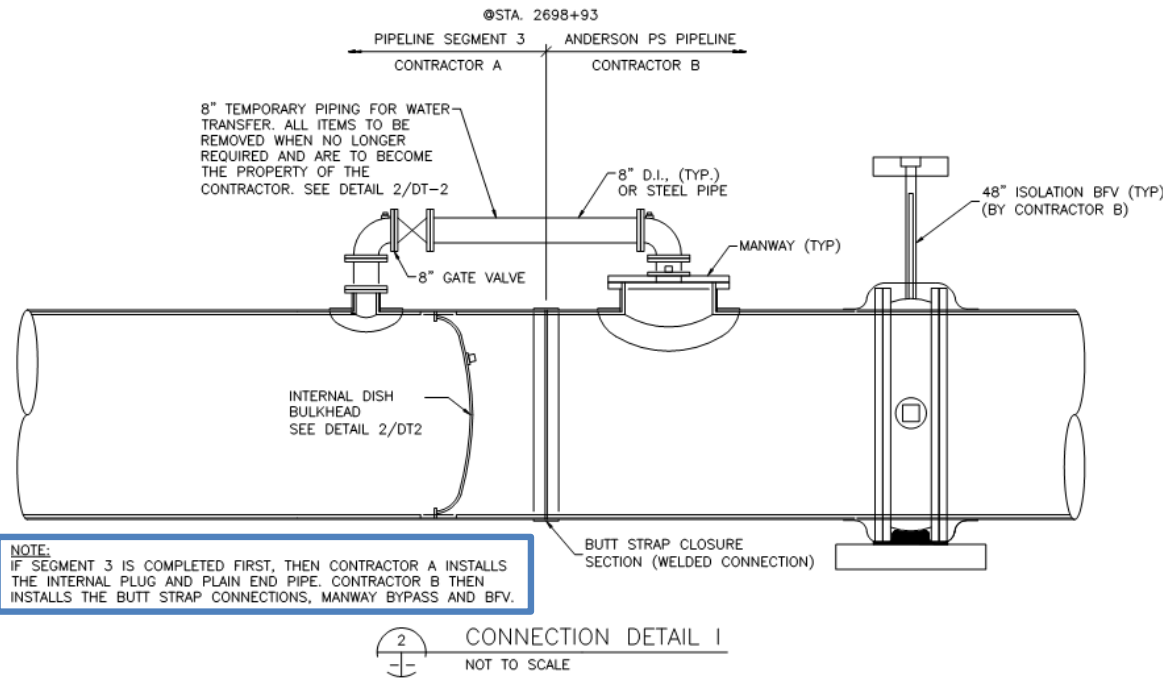


## Tie-in Location



## Anderson Pump Station Tie-in

# Segment 3 Anderson Pump Station Tie-in



# Project Special Conditions

- Clear and survey land and utilities prior to Pipe Lay Submittal
- Karst zone trench width limitations. Rocky soil conditions within area of environmental impact
- Authorized under the Nationwide Permit No. 12 for stream crossings and wetland areas. Contractor shall not disturb more than 1/10th of an acre within the water way and must restore all ground surface elevations to pre-existing conditions
- Contractor is responsible for:
  - Coordination with Utility Companies
  - Identification and location of horizontal and vertical locations of all utility crossings



# Project Special Conditions

## Contractor Coordination

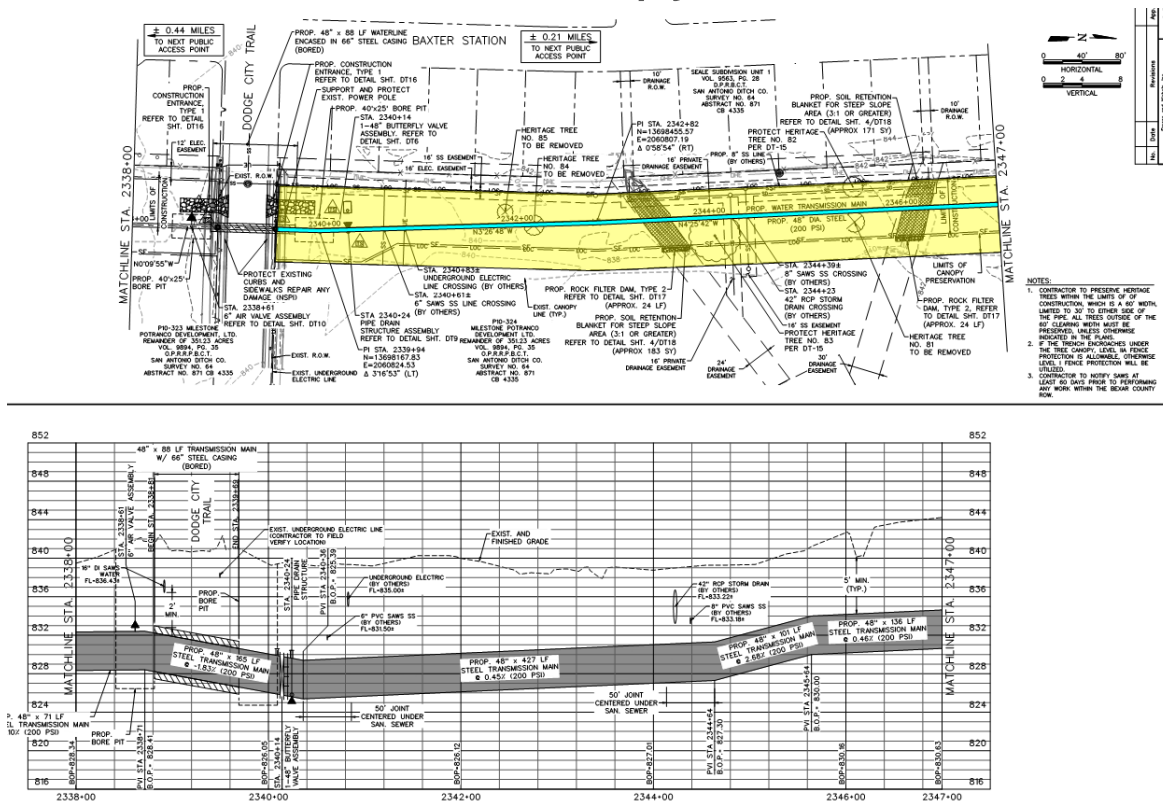
- CoSA – Comply with Floodplain, ROW, and Tree Permit Requirements
- TxDOT – Notify SAWS 60 days prior to construction in TxDOT ROW
- Bexar County – Comply with Floodplain, Storm Water, and ROW Permit Requirements
- CPS Energy – Apply for rectifier Power Supply 120 days in advance
- Waste Management of Texas – Install gas vents along alignment near landfill site
- HOAs – Notify HOAs up to 45 days prior to construction

# Project Special Conditions

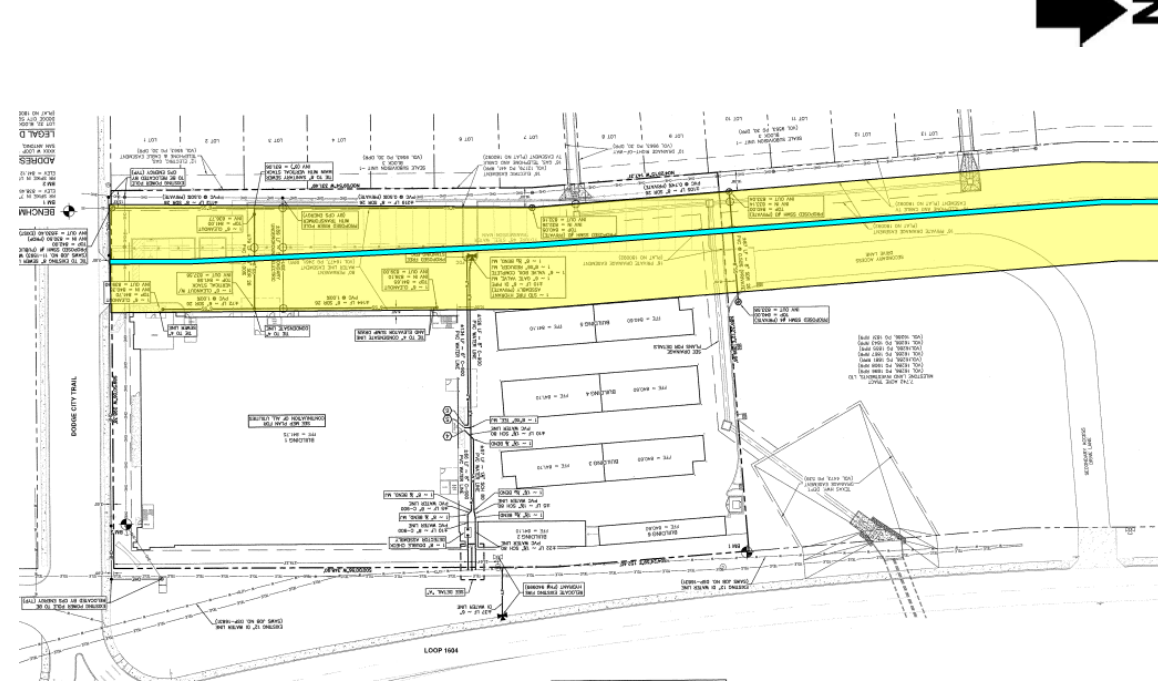
- CoSA Tree Permit
  - Coordinate CoSA Arborist – pre-construction walk-through
  - Protective measures shall be utilized to preserve Heritage Trees within the 60' limits of construction. All trees outside of the 60' clearing width must be preserved.
  - Staging, parking, material storage areas and project limits of clearance must be approved by the CoSA Field Inspector prior to construction
  - Re-seed disturbed areas with slopes less than 3:1 by drill seeding
  - Where slopes are greater than 3:1, hydromulching shall be used
  - 85% establishment of native seed is required
  - Silt fencing and temporary fencing will be utilized to delineate limits of construction

# Construction Sequencing - Addendum Pending

- Dodge City Storage Facility (Sheet W39, STA. 2339+40 to STA. 2347+00)
  - Schedule: Dodge City Storage Facility Construction to begin in 2021. This length of Segment 3 Pipeline shall be constructed by June 2021



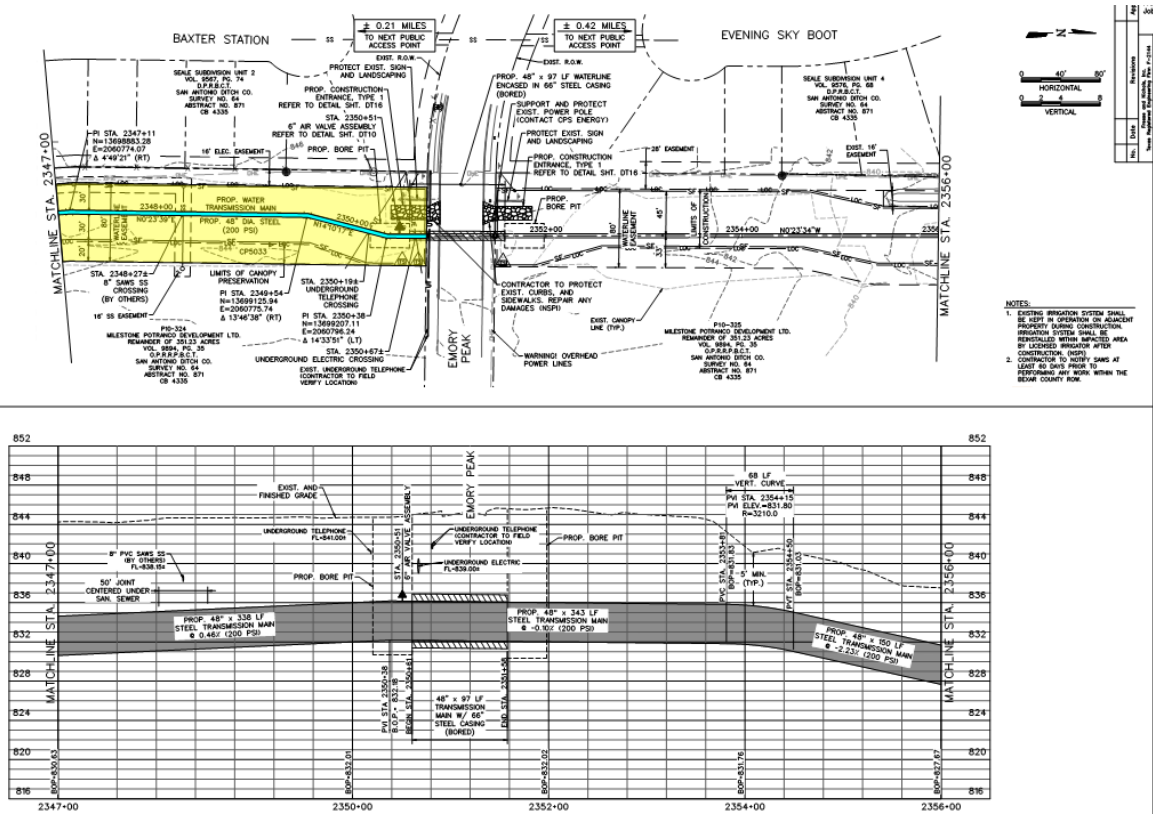
Segment 3 Pipeline



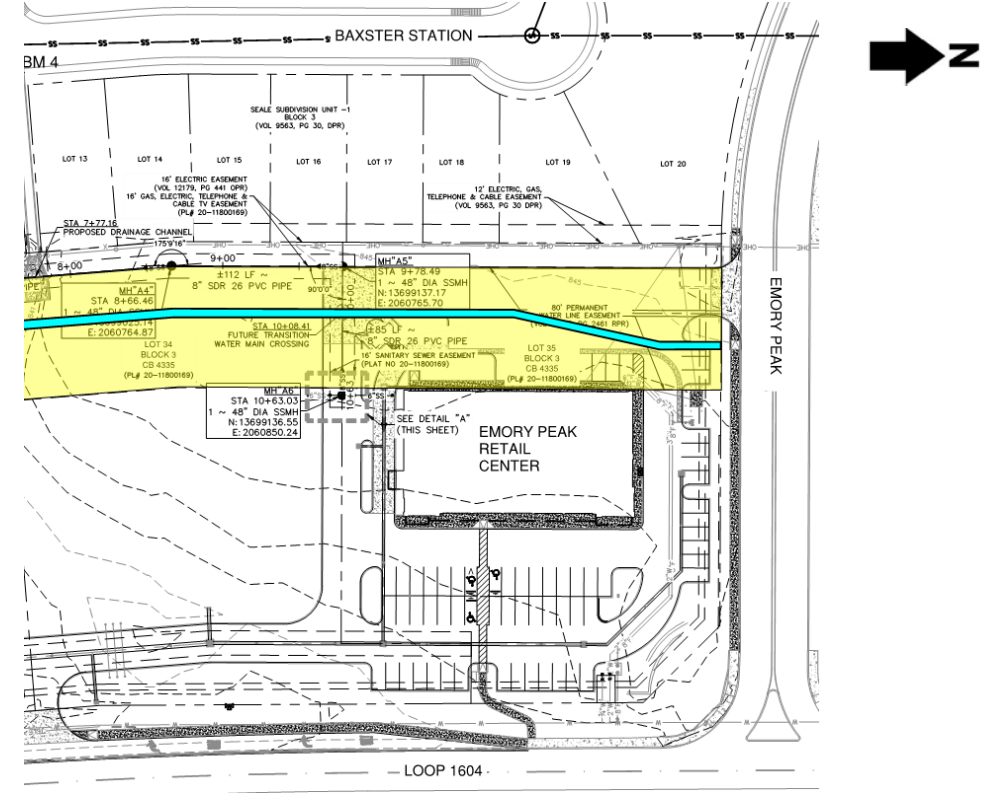
Dodge City Storage

# Construction Sequencing - Addendum Pending

- Emory Peak Retail Center (Sheet W40, STA. 2347+97 to STA. 2350+91)
  - Schedule: Development construction to begin November or December 2020 with site work improvements within the first 3-4 months. This length of Segment 3 Pipeline construction shall be completed by March 2021



Segment 3 Pipeline

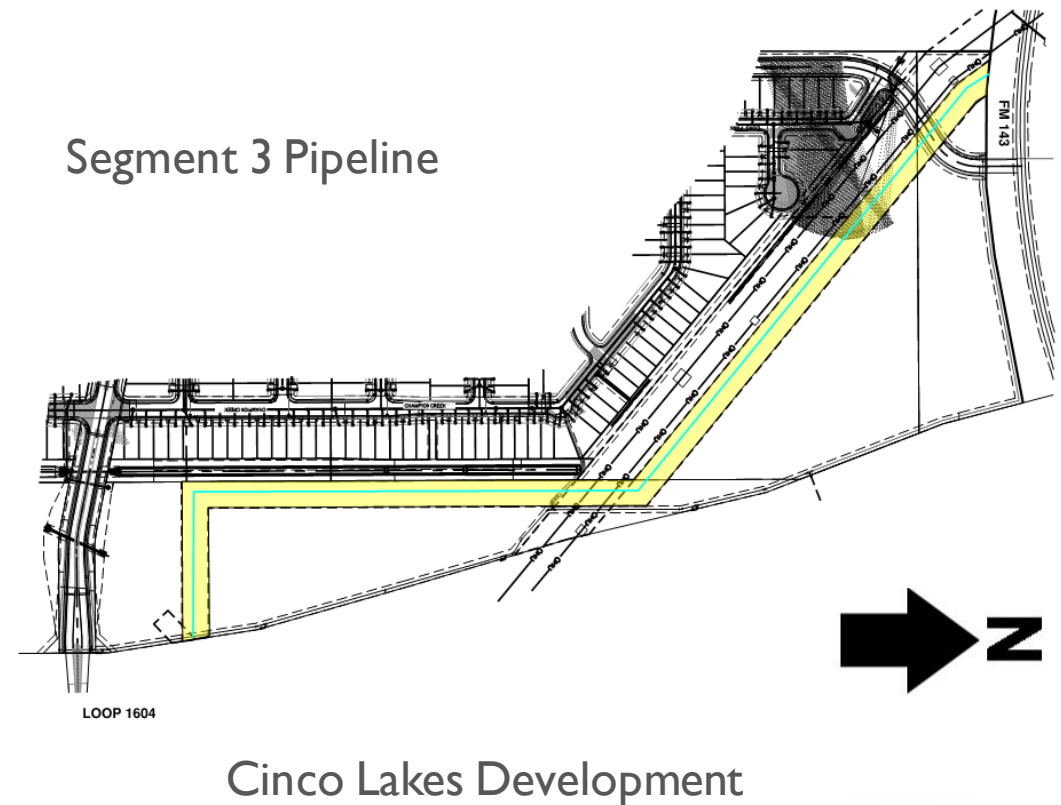


Emory Peak Retail Center



# Construction Sequencing - Addendum Pending

- Cinco Lakes Development (Sheets WI3-WI7, STA. 2131+51 to STA. 2147+12)
  - Schedule: Construction is in progress. Roadway crossing alignment anticipated to be constructed during second quarter of 2021. This length of Segment 3 Pipeline shall be constructed by March 2021

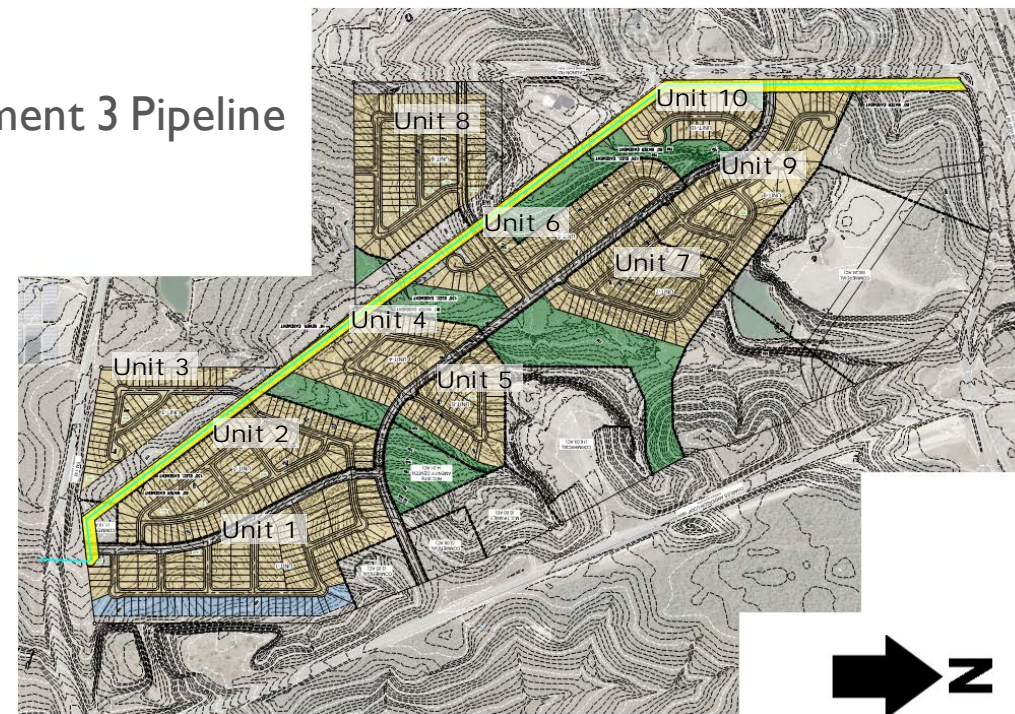


# Construction Sequencing - Addendum Pending

- Applewood Development (Sheet WI9, STA. 2168+00 to STA. 2170+00)
  - Schedule: Unit 1 began construction in February 2020. The remaining units will be consecutively built, each requiring a year for construction, for a total of approximately 10 additional years of construction. This length of Segment 3 pipeline shall be constructed within 180 days of NTP



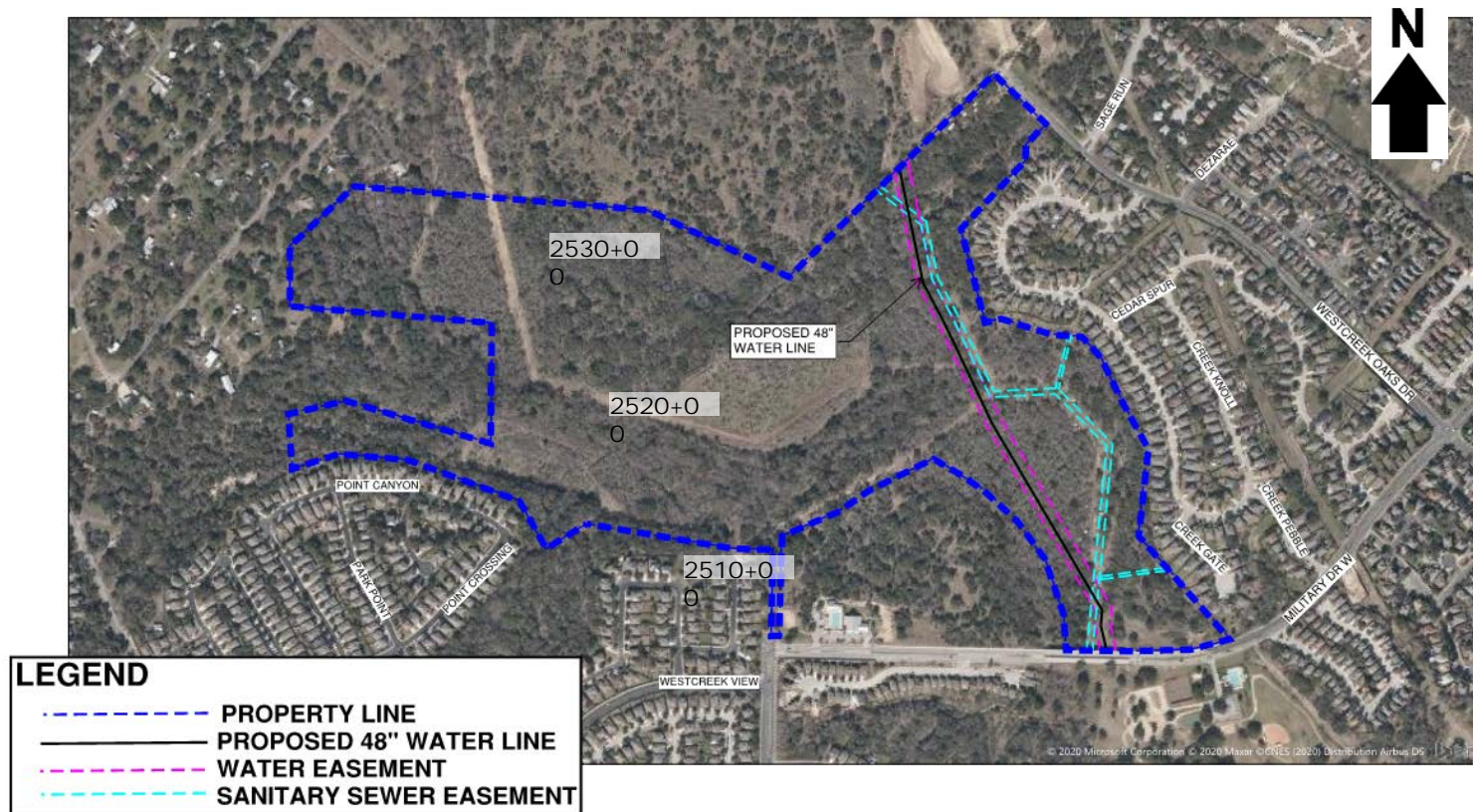
Segment 3 Pipeline



Applewood Development

# Construction Sequencing

- Owl Creek Farm – Fall Pumpkin Patch (Sheets W57-W60, STA. 2502+15 to STA. 2530+10)
  - Schedule: Avoid construction between September 1 to November 15

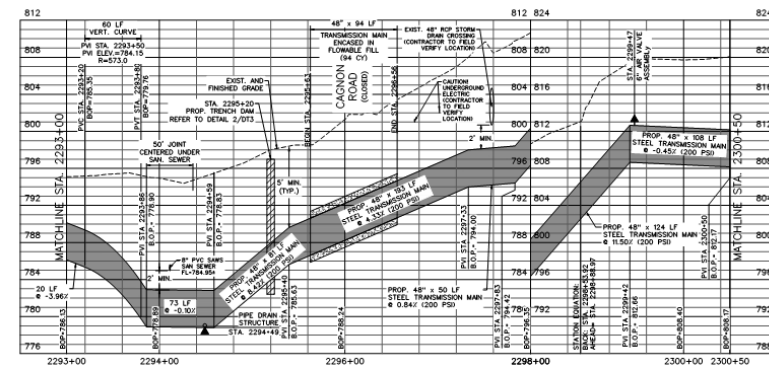
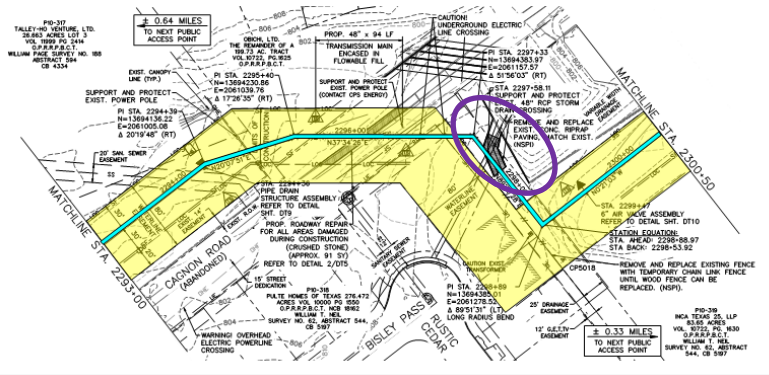


# Construction Sequencing

- Region near Cagnon Road pending land acquisition (Sheet W34, STA. 2297+10 to STA. 2298+89)
  - Schedule: This length of Segment 3 Pipeline shall not be constructed until 600 days after NTP, unless SAWS provides prior authorization in writing



Segment 3 Pipeline



Land Acquisition Region



# Questions?

Oral statements or discussion during the pre-proposal meeting will not be binding, nor will it change or affect the terms or conditions within the Plans and Specifications for this Project. Changes, if any, will be addressed only via an Addendum.

# WATER RESOURCES INTEGRATION PROGRAM (WRIP) PHASE 2 – PIPELINE SEGMENTS 2C AND 3 PROJECT

**Nathaniel Virdell, P.E.**

Project Engineer, SAWS

**Florinda Gonzales**

Interim Contract Administrator, SAWS

**Marisol V. Robles**

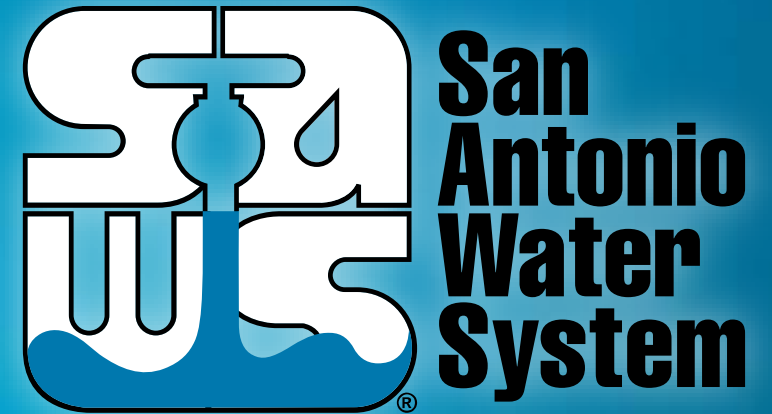
SMWB Program Manager, SAWS

**Robert Jenkins, P.E., PMP**

Project Manager, Freese & Nichols, Inc.

**Terry Conn, P.E., PMP**

Principal, Senior Project Manager, Civil Engineering Consultants, Inc.



Non-Mandatory Pre-Proposal Meeting  
August 12, 2020 at 10:00 AM

MAKING SAN ANTONIO  
**WATERFUL**

